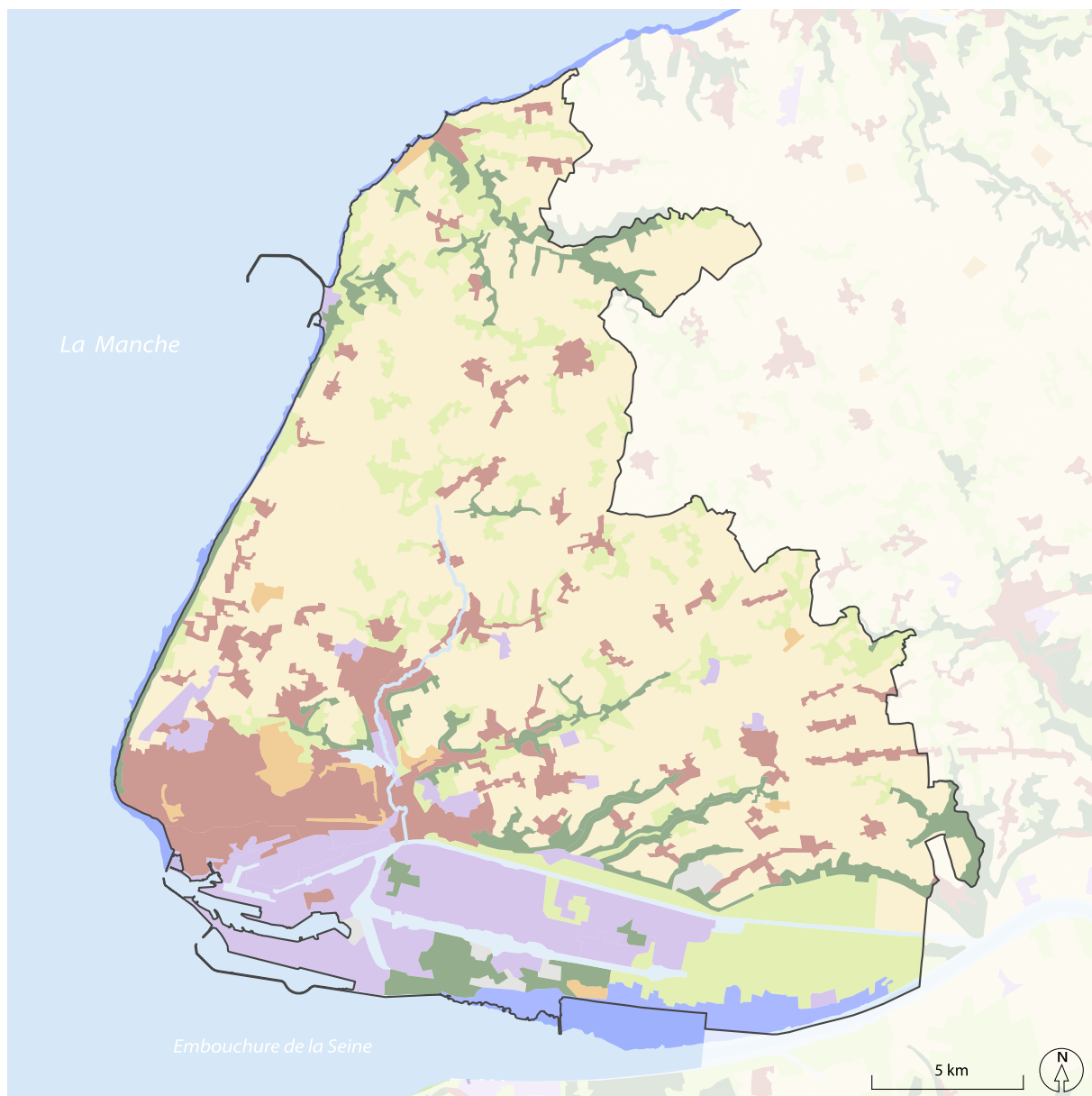





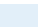


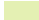


# Occupation des sols sur le territoire de la CU Le Havre Seine Métropole



## Typologie de l'occupation des sols

- |   |   |
|---|---|
|  Espace urbanisé                 |  Espace boisé                              |
|  Zone économique et industrielle |  Mine et carrière                          |
|  Espace boisé artificiel         |  Eau surfacique                            |
|  Espace agricole                 |  Plaine alluviale, estran et espace côtier |
|  Prairie                         |   |

## Limites administratives

-  CU Le Havre Seine Métropole